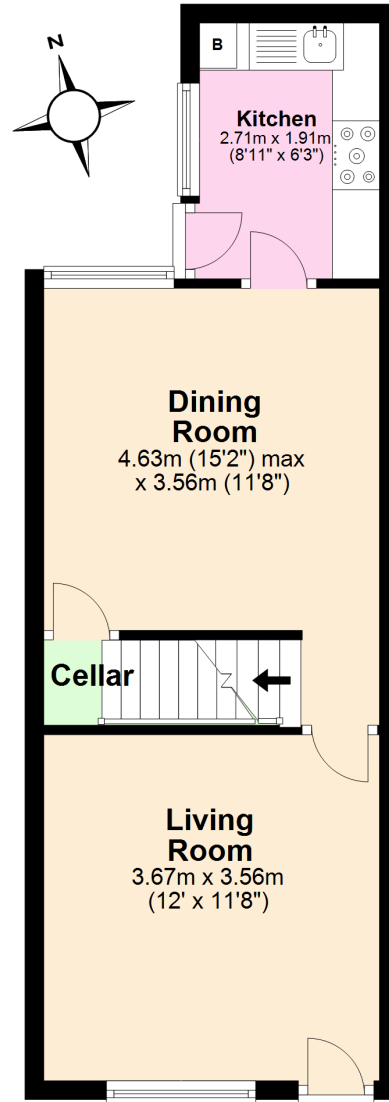


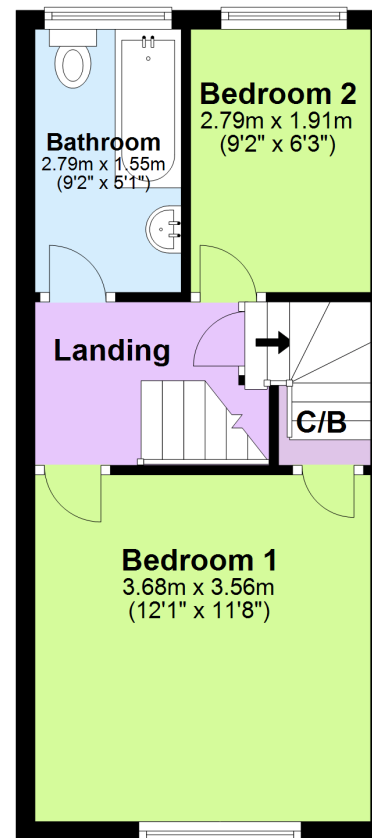
## Ground Floor

Approx. 35.3 sq. metres (379.5 sq. feet)



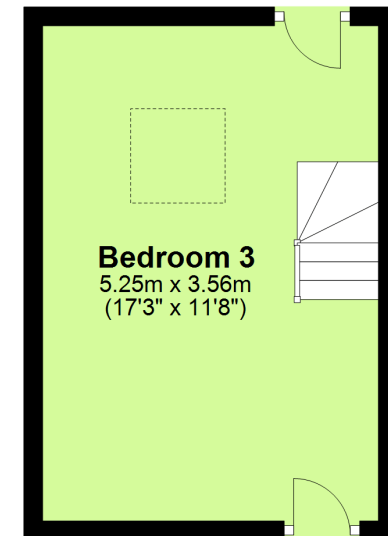
## First Floor

Approx. 29.9 sq. metres (321.8 sq. feet)



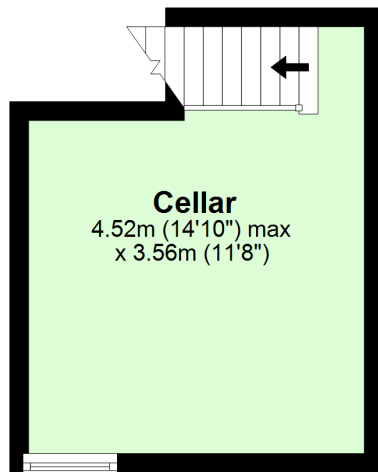
## Second Floor

Approx. 18.7 sq. metres (201.0 sq. feet)



## Basement

Approx. 14.5 sq. metres (155.6 sq. feet)



Total area: approx. 98.3 sq. metres (1057.9 sq. feet)